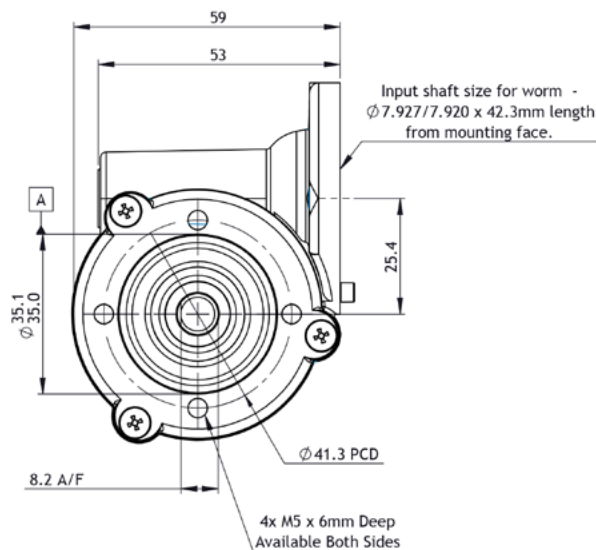
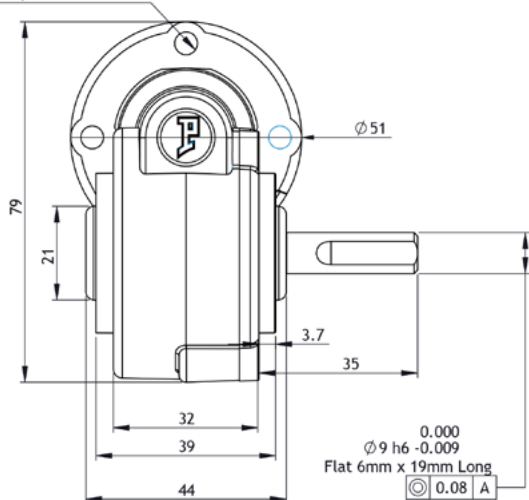


Mounting holes -  $\phi 5.1$  on 41.3 PCD



### Part number key

Modular	#####
Standard	#####
Special	#####

<sup>1</sup> Other ratios available on request (!): 6, 7, 8, 9, 11, 12, 13, 14, 16, 18, 22, 25, 27, 33, 36, 44, 54, 66

### Technical data

1 Part number		S4C	S5C	S10C	S15C	S20C	S30C	S40C	S48C	S60C	S70C
2 Gear ratio <sup>1</sup>	.1	4	5	10	15	20	30	40	48	60	70
3 Stages		1	1	1	1	1	1	1	1	1	1
4 Max. continuous torque (S1)	Nm	3.0	3.0	3.0	3.0	3.0	3.0	3.0	2.5	2.2	2.0
5 Max. intermittent torque (S3)	Nm	4.8	4.8	4.8	4.8	4.8	4.8	4.8	4.0	3.5	3.2
6 Efficiency	%	80	80	80	75	70	65	60	55	48	40
7 Backlash	arc.min	10-25	10-25	10-25	10-25	10-25	10-25	10-25	10-25	10-25	10-25
8 Max. axial load (dynamic)	N	150	150	150	150	150	150	150	150	150	150
9 Max. radial load, 12 mm from flange	N	250	250	250	250	250	250	250	250	250	250
10 Weight	kg	0.3	0.3	0.3	0.3	0.3	0.3	0.3	0.3	0.3	0.3
11 Gear material		Composite	Composite	Composite	Composite	Composite	Composite	Composite	Composite	Composite	Composite

\* S1 & S3 duty cycles based on 3000 RPM input speed

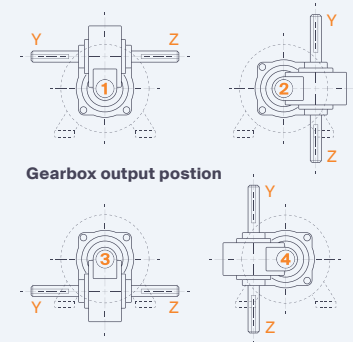
### Modular system

BLDC motor	+L mm	PMDC motor	+L mm
PBL42	90	PM7	84
PBL42	110	PM8	97
		PM9	110
		PM10	107
		PM11	126

+L mm = added length



AC motor	+L mm	AC motor	+L mm
SD8	125	SD29	147
SD21	95	SD38	128
SD28	144	SD41	107



Gearbox output position