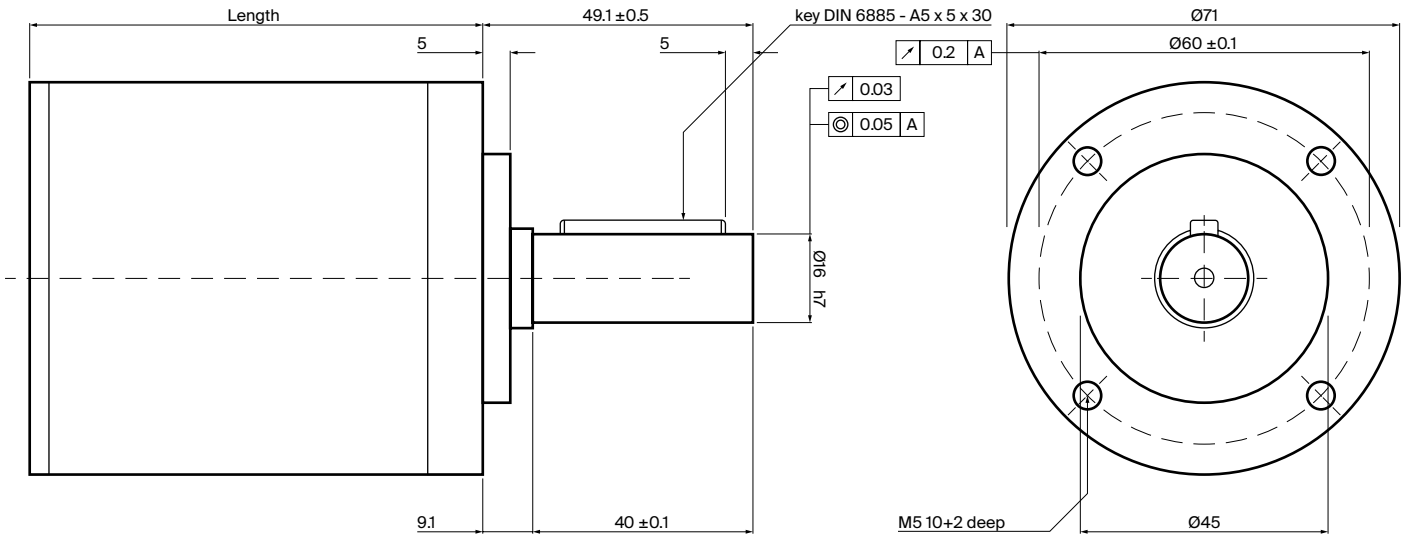


4:1 - 543:1 ratio // 114.0 Nm



Part number key	
Modular	#####
Standard	#####
Special	#####

<sup>1</sup>Additional ratios available on request (:1): 13

Technical data		71-4	71-16	71-20	71-50	71-60	71-75	71-91	71-189	71-414	71-543
1 Part number											
2 Gear ratio <sup>1</sup>	:1	4	16	20	50	60	75	91	189	414	543
3 Stages		1	2	2	3	3	3	3	4	4	4
4 Max. continuous torque (S1) <sup>2</sup>	Nm	12.6	37.8	37.8	75.6	75.6	75.6	75.6	76.6	75.6	75.6
5 Max. intermittent torque	Nm	18.9	56.7	56.7	56.7	114.0	114.0	114.0	114.0	114.0	114.0
6 Efficiency	%	90	81	81	73	73	73	73	66	66	66
7 Backlash	arc.min	36	39	39	42	42	42	42	45	45	45
8 Max. axial load (dynamic)	N	70	100	100	160	160	160	160	160	160	160
9 Max. radial load, 12 mm from flange	N	320	480	480	760	760	760	760	760	760	760
10 Weight	kg	0.9	1.2	1.2	1.6	1.6	1.6	1.6	1.9	1.9	1.9
11 Gear material <sup>3</sup>		C/S	C/S	C/S	C/S	C/S	C/S	C/S	C/S	C/S	C/S
12 Length	mm	49.3	65.8	65.8	82.3	82.3	82.3	82.3	98.8	98.8	98.8

<sup>2</sup> S1 duty cycle based on 3000 RPM input speed <sup>3</sup> Gear material: C = Composite, S = Steel

**Modular system**

PMDC motor	+L mm	PMDC motor	+L mm	PMDC motor	+L mm
BRx70-40	125	EPM50-63	155	PM5	162
BRx70-60	146	PM1	149	PM6	175
EPM50-25	119	PM2	162	PM50	180
EPM50-38	138	PM3	137	PM60	193
EPM50-50	145	PM4	149		

BLDC motor	+L mm	AC motor	+L mm
PBL70-70	112	SD13	152
PBL70-80	122	SD18	158
		SD28	144

+L mm = added length