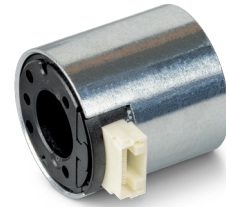


# ENX 22 EMT Encoder $\varnothing$ 22 mm, 65 536 turns, multi-turn 131 072 steps, single-turn

**NEW**



**ENX**

Key data		ENX 22 EMT
Multi-turn: max. no. of turns		65 536
Multi-turn: resolution (bits)		16
Single-turn: steps per turns		131 072
Single-turn: resolution (bits)		17
Encoder length L <sup>1</sup>	mm	22.75
Ambient temperature	°C	-40 ... +105
Weight	g	25

Selection criteria		ENX 22 EMT
Multi-turn detection		■
Detection of speed and rotation direction		■
Speed and position control		■
Compact and robust design		■
High resolution		■
Economical		▲

■ suitable ▲ suitable to a limited extent ● not suitable

Specifications		ENX 22 EMT
Supply voltage Vcc	V	5 ±0.5
Typical current draw	mA	90
Max. speed	rpm	12 000
Data encoding		Binary
Min. clock frequency CLK (MHz)		BiSS-C: 0.1      SSI: 0.08
Max. clock frequency CLK (MHz)		BiSS-C: 10      SSI: 1
Min. timeout (µs)		BiSS-C: 7..12.5      SSI: 6
Setup time after Power On	s	Max. 0.1
Moment of inertia of pulse disk	gmm <sup>2</sup>	≤ 1.55
Plug manufacturer JST		Pin 1: GND
Plug type no. BMO8B-NSHSS -TBT		Pin 2: Do not connect
Matching connector type no. NSHR-08V-S		Pin 3: Do not connect
		Pin 4: Data+ / SLO+
		Pin 5: Data- / SLO-
		Pin 6: CLK- / MA-
		Pin 7: CLK+ / MA+
		Pin 8 V <sub>cc</sub>
		Output signals: EIA standard RS422
		Output current per channel: ±20 mA



Configuration		ENX 22 EMT
Signal protocol		BiSS-C, SSI

maxon modular system	Page	Dimensions of standard configuration	M 1:2	Additional information
maxon EC motor				
EC-4pole 22	257-258			<p><sup>1</sup> The length shown here refers to the encoder. An additional intermediate plate is required for motor mounting. For more detailed information, see the combined dimensional drawing.</p> <p>EC motors: The angle value 0 is calibrated to the commutation phase of coil 1 (equates to Hall signal 1 for motors with Hall sensors, block commutation), see p. 56.</p> <p>Ordering information: For motors that cannot be configured online, the part numbers <b>711113</b> (BiSS-C) and <b>711112</b> (SSI) must be used when ordering.</p> <p>You can find more information in the maxon online shop under Downloads.</p>
EC-4pole 30	259/261			
		<p>Connecting cable 300 mm for EPOS4 Aux Enc <b>708590</b></p>	<p><b>xdrives.maxongroup.com</b></p>	